

Contact Us

For additional information or to share your thoughts, please contact the Restoration Partnership at:

Restoration Partnership
424 Sherman Ave., Ste. 306
Coeur d'Alene, ID 83814
(208) 582-4080

Or you can visit our website at
www.restorationpartnership.org

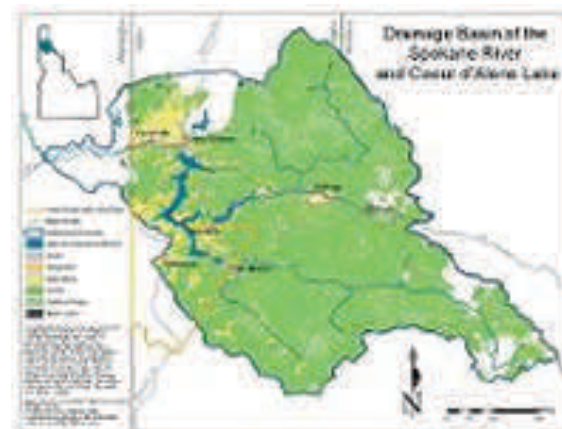
We highly value community input and involvement.

The Coeur d'Alene Basin

The Coeur d'Alene Basin includes all the land that drains water into Coeur d'Alene Lake and out the Spokane River. The area encompasses approximately 2.4 million acres of mountainous terrain with numerous streams, rivers, and lakes. It starts upstream to the east near the Montana border. Here, the South Fork Coeur d'Alene River flows through what is referred to as the 'Silver Valley'. It then converges with the North Fork Coeur d'Alene River at Enaville, Idaho and becomes the Coeur d'Alene River mainstem. The Coeur d'Alene River mainstem continues to flow west through the chain lakes until it reaches the Coeur d'Alene Lake.

From the South, the Coeur d'Alene Basin includes the St. Joe and St. Maries rivers. These rivers converge in St. Maries, Idaho and become the St. Joe River mainstem. The St. Joe River mainstem flows northwest for approximately 20 miles where it, too, meets Coeur d'Alene Lake.

The Coeur d'Alene Lake is the main body of water in the Coeur d'Alene Basin. It flows north to its outlet, the Spokane River, at Coeur d'Alene, Idaho.



Other Restoration Partnership Accomplishments

- Approved and adopted Policies and Procedures.
- Approved Natural Resource Restoration Team Charter.
- Approved draft budget worksheets and annual work plan.
- Developed initial Restoration Planning Mission Statement, Goal and Objectives.
- Developed a *DRAFT* Purpose and Need Statement.
- Provided technical comments on the 2012 EPA OU3 ROD Amendment (RODA).
- Developed an adaptive RPEIS timeline.
- Developed and adopted an adaptive Restoration Planning Outreach Strategy.
- Developed DRAFT of RPEIS — Sections 1 and 2.
- Initiated first Subbasin assessment (SBA) for RPEIS — Section 3.
- Maintained communications with EPA Project Leader and Bunker Hill staff to coordinate remedial actions with restoration activities.

2012

Restoration
Partnership

Accomplishments



Trustee Council

In 2012 the Coeur d'Alene Basin Natural Resource Trustees signed a Memorandum of Agreement (MOA) that established the Coeur d'Alene Basin Natural Resource Trustee Council (TC). The purpose of the TC is to administer natural resource restoration in the Coeur d'Alene Basin. The TC accomplishes this work in a way that maximizes the benefits to injured natural resources and the public.

The TC is comprised of one representative each from the U.S. Department of Interior, Coeur d'Alene Tribe, U.S. Department of Agriculture and State of Idaho. Each voting TC member is responsible for consulting and coordinating with his or her respective bureaus, departments and organizational levels regarding decisions to be made by the TC. And although members collaborate with one another on natural resource restoration, all maintain their full, individual authorities and prerogatives.

inside

- Setting the Stage **P.1**
- Pine Creek/Wetland **P.2**
- Robinson Creek **P.3**
- Other Accomplishments **P.4**

Setting the Stage

Fiscal year 2012 (FY12) was a foundational year to develop working relationships among the natural resource trustees and staff, complete guiding documents and set goals, obtain necessary training, and to begin planning for natural resources restoration in the Coeur d'Alene Basin. Throughout FY12, the Natural Resource Restoration Team (Team) spent a majority of the first part of the year getting to know each other's strengths and backgrounds as they pertain to natural resource protection and restoration in the basin. A number of foundational milestones needed to be accomplished prior to drafting the Restoration Plan Environmental Impact Statement (RPEIS).

The State of Idaho Authorized Official designated their Trustee Council (TC) member as the Regional Supervisor of Idaho Department of Fish and Game (IDFG).

Additionally, two State Team members were identified; one from IDFG and the other from the Idaho Department of Environmental Quality (DEQ).

The U.S. Fish and Wildlife Service (USFWS) also hired a full-time staff member to represent USFWS on the Team. The TC worked with the Coeur d'Alene Tribe to interview and hire a Communications Specialist to assist the Team in implementing the draft Outreach Strategy and assist with public scoping in the future.

Coeur d'Alene Basin Trustee Accomplishments through the Trustee Council and Team are highlighted in this publication. See the Coeur d'Alene Basin RPEIS Timeline for specific accomplishment dates.

Trustee Council (Continued...)

The TC meets regularly throughout the year. It is governed by the 2012 MOA and the 2012 *Coeur d'Alene Basin Natural Resource Trustee Council Policies and Procedures Guiding Restoration of Injured Natural Resources*.

The TC appointed the Natural Resource Restoration Team (Restoration Team) which provides the TC with technical expertise in the development and subsequent implementation of a restoration plan. Much of the work of the TC occurs through the Restoration Team. The TC provides oversight and guidance to the Restoration Team.

The TC also engages the public regarding the restoration planning and implementation process. It is a primary concern for the TC to partner with the public throughout the course of planning and implementing restorative activities. Obtaining input and building collaborative partnerships is essential to maximizing benefits to the community. Public meetings, website, presentations and promotional materials are examples of how public engagement is and will be occurring.

The TC complies with all applicable laws and regulations including NEPA.



Pine Creek Project

Pine Creek

The Pine Creek watershed covers approximately 79 square miles in the St. Joe Mountains and feeds the South Fork Coeur d'Alene River at Pinehurst. Since the end of the 19th Century increased bedload, due in part, to hard rock mining and the removal of large cedar trees has led to channel instability. On many reaches of Pine Creek, channel width has increased by over 50% since 1933. This instability is not beneficial to the variety of fish species that are supported here. Pine Creek has been a Trustee project and is listed in the 2007 Coeur d'Alene Basin Final Interim Restoration Plan (FIRP).

The Pine Creek project was designed to complement remedial and restoration activities already finished in an effort to allow for channel stability and improved habitats for fish species. The Bureau of Land Management (BLM) is the Lead Trustee on this project which targets 13.6 stream miles. Additional details can be found in the FIRP.

Accomplishments in FY12 for the Pine Creek project included:

- Ongoing monitoring of 21,000 riparian plantings.
- Trench planting of 5000 additional nursery plants.
- Installation of flow deflectors.

Both riparian plants and flow deflectors reduce sediment runoff and result in bank stabilization. The plants provide shade for cool water while the flow deflectors provide pools and riffles. All three effects are important characteristics of quality fish habitat.

FY13 will be the 6th year of implementation of the Pine Creek Restoration Project. The activities are expected to be a continuation of work from FY12. This includes ongoing floodplain restoration and revegetation in the East Fork of Pine Creek.

Restoration Partnership Accomplishments for Fiscal Year 2012 (FY12)

Fiscal Year is from October 1 to
September 30

Wetland Restoration

The Wetland Restoration Project is a wetland-based restoration project located in the lower Coeur d'Alene Basin. It includes nearly 400 acres of privately-owned farmland that has been transformed into wetlands. The purpose of establishing this conservation easement was to provide safe waterfowl feeding habitat.

“Pine Creek was designed... to allow for channel stability and improved habitats for fish...”

By 2007, 95% of wetland habitat in the Lower Basin contained surface lead levels that were toxic to Tundra swans. As a result, 40,000 swan-years had been lost between 1981 and 2004.

The Wetland Restoration conversion has been completed and waterfowl and other wildlife have been seen utilizing the area. This project is an example of collaborative efforts between the Trustees and private landowners and how these efforts can work toward restoration.



Wetland Restoration Project

Robinson Creek

In FY12, Trustees enhanced the 400 acres of wetland by providing:

- Ongoing monitoring of wetland plant growth.
- Vegetative and weed management.
- Wild rice plantings.
- Water level management (i.e. maintenance of water pump and repair of dikes).

Plantings enhance the wetland property while management efforts provide protection. FY13 activities will consist of ongoing monitoring and water level management.

The Robinson Creek Habitat Segment (RCHS) Expansion is a wetland-based restoration project located in the lower Coeur d'Alene River Basin adjacent to the Schlepp Ag-to-Wetland property. Fifty-two acres was purchased by the Idaho Department of Fish and Game for the purpose of providing safe waterfowl feeding habitat.

In FY12, ten additional acres adjacent to the original Robinson Creek property was purchased with Natural

Resource Damage Assessment (NRDA) settlement funds. The combined 62 acres is located in the Coeur d'Alene River Wildlife Management Area (CDARWMA). Extension of the property boundaries facilitates more flexibility in restoration design and water level management to benefit wildlife in general and tundra swans in particular.

The Idaho DEQ and IDFG, along with Terra Graphics are currently collaborating on conceptual designs of the water management system for restoration.

FIRP

Q: What is the Final Interim Restoration Plan (FIRP)?

A: The Final Interim Restoration Plan is a document that was developed by the Natural Resource Trustees in 2007. It gains its legal authority from the Comprehensive Environmental Response, Compensation and Liability Act (CERCLA) of 1980 (as amended). It concluded with an Environmental Assessment and a Finding of No Significant Impact (FONSI). The process of

developing a restoration plan and environmental assessment is laid out in CERCLA as well as the National Environmental Policy Act (NEPA). It is a process that requires community input. The FIRP was written to begin restoration work until a Final Restoration Plan could be developed and an Environmental Impact Statement (EIS) finished. The projects listed in this Accomplishment Report are identified in the FIRP. The FIRP identifies additional projects as well.

Restoration Team

In 2012 the Coeur d'Alene Basin Natural Resource Trustee Council appointed a Natural Resource Restoration Team (Restoration Team). The Restoration Team's purpose is to provide technical expertise to the TC in the development and subsequent implementation of a restoration plan. The mission of the Restoration Team is:

Develop and implement a restoration plan to restore the health, productivity and diversity of injured natural resources and the services they provide in the Coeur d'Alene Basin for present and future generations.

The Restoration Team is comprised of various Natural Resource specialists and technicians from multiple agencies. These professionals collaborate with each other and their respective agencies on an ongoing basis to achieve the Restoration Team's mission.

The Restoration Team regularly updates the TC on its progress. It also fulfills many other responsibilities that have been outlined in the 2012 *Coeur d'Alene Basin Natural Resource Trustees' Natural Resource Restoration Team Charter*.

The Restoration Team complies with all applicable laws and regulations including NEPA.